



ENDURANCE  
**CARBIDE**  
OUTLAST - OUTPERFORM

Providing **superior** products and **service** since 1961.



*American Made | Family Owned*

# WHAT WE DO

Your business requires carbide wear parts that are precision made to your exacting specifications. That's why **Endurance Carbide** has the ability to hold tolerances of 0.00002" in many applications.

Each tungsten carbide precision wear part that we manufacture has different size capabilities. Based on your product configurations, we have the capability of manufacturing:

**BUSHINGS** WITH A 4.00 OUTSIDE DIAMETER

**DIES TO 4"** (DEPENDING ON PRODUCT SHAPE)

**RING GAGES** FROM 0.060 TO 3.500

**PLUG GAGES** FROM 0.060 TO 3.500

**CARBIDE PUNCHES** DOWN TO A 0.010" POINT DIAMETER

**CARBIDE FORM PUNCHES**

**CARBIDE GRINDING QUILLS**

**CARBIDE FORM INSERTS**

## The Benefits Of Tungsten Carbide Wear Parts

Tungsten carbide parts offer significantly more rigidity and strength than is afforded by steel. The upgrade in strength offers very clear benefits: tungsten carbide parts are typically replaced much less frequently than steel parts, which helps reduce maintenance costs while minimizing time spent servicing your machinery. The resulting increase in productivity easily helps offset the higher up-front costs of tungsten carbide tools. The rigidity of the material is most notably beneficial in precision-grinding applications. Stiffer quills experience less deflection during operation, which in turn allows machinists to exhibit greater control over the quill's movements.



# LEADER IN CARBIDE WEAR PARTS

When you choose **Endurance Carbide**, you also choose tungsten carbide precision wear parts designed for improved accuracy. That's because we're able to maintain a better cutting edge during the manufacturing process, so that your accurate parts stay accurate for longer periods of time.

What's more, **Endurance Carbide** offers an extensive selection of carbide wear parts. Therefore, you can purchase all your carbide specialty tools from a single source, helping cut down on administration headaches regarding the purchasing of parts.



Carbide Bushings



Carbide Dies

# CARBIDE PUNCHES

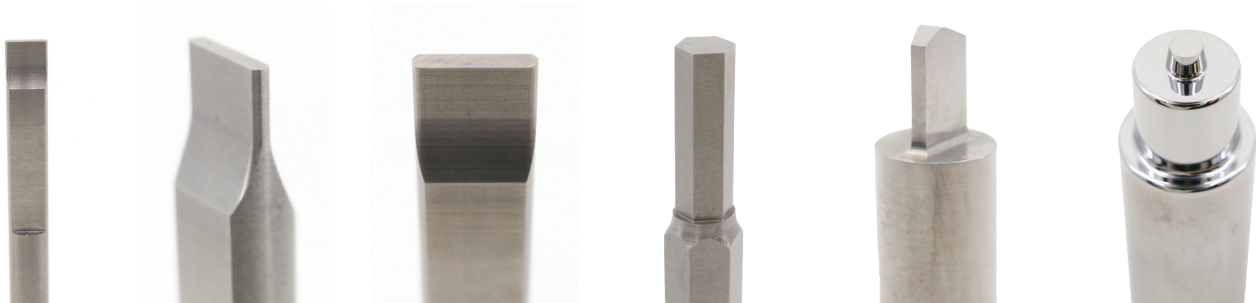
Carbide Punches will increase productivity by reducing replacement tooling cost and downtime. Piercing, shaving, forming, extrusion punches and burnishers per print. Specials and standards from .030" to 6" in diameter.

**Endurance Carbide** Tungsten Carbide Punches will increase productivity by reducing replacement tooling cost and downtime. Punches manufactured in carbide can improve the quality of your product and extend the life of your tooling. Working with you, to supply you with carbide components for your Die Set Assembly.



## CARBIDE FORM PUNCHES

**Endurance Carbide** is known throughout the world for our precision quality tungsten carbide form punches including Tungsten Carbide Oblongs, Square, Flat, Offset, Hex, Blueprint specials for your specific needs.



## FORM TOOLS

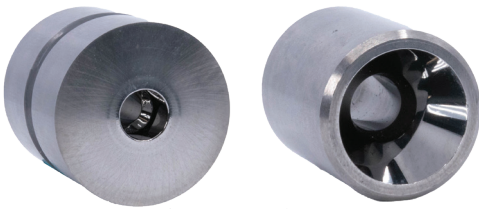
## CARBIDE GRINDING QUILLS



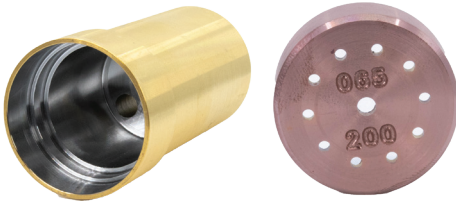
# CNC TURNING SERVICES

Endurance Carbide is committed to working with you & your confidential blueprints to provide you with CNC turning services.

We guarantee to maintain a high level of integrity, and protect your proprietary designs. We welcome Non-Disclosure Agreements. ISO 9001:2015 certified management system along with our quality assurance processes followed by our knowledgeable skilled machinists, insure that your parts will be manufactured exactly to your blueprint requirements.



Custom Dies



Platit® Accessories

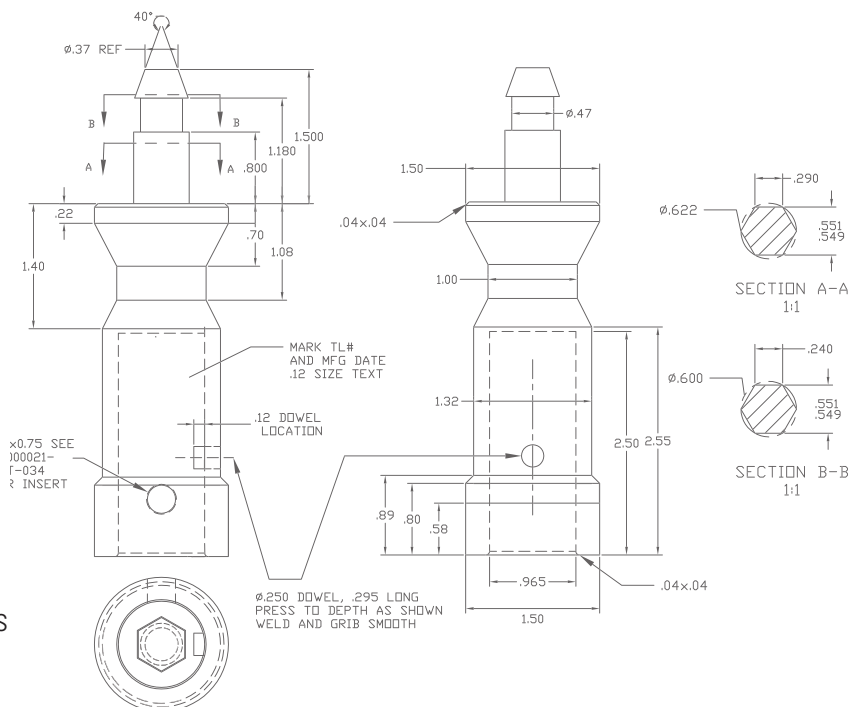
## PRECISION INDUSTRIAL WEAR PARTS

Aluminum, Steel, Stainless Steel, Delrin  
Turning raw material into the part you need.  
CNC turning centers, have the ability to machine complex parts with Consistency, Precision and Speed.  
Quicker cycle time, lower cost.

We can provide for you:  
Quick response to your RFQ  
Short Lead times  
Short and long production runs



OTEC® Accessories



# EQUIPMENT

## GRINDING / WIRE EDM

Rollomatic NP5 with Shapemart CNC Grinder  
ANCA TX-7 CNC Grinder  
Royal Master TGx4 Centerless Grinder w/auto feeder  
Wire EDM's – 4 wires – with a Charmilles Cut E350  
Reinecker RS 700



## MILLING / TURNING

HAAS VF8 VMC  
Mori Seiki NLX1500SY/500 Turning Center  
Fadal 2216 FX



## MEASUREMENT EQUIPMENT

MAHR – Precimar ULM300E Calibration measuring instrument  
Jenoptik T8000 Contour Measurement Tracer  
Keyence – Micrometer Systems  
Starrett - HE400-M1-SP Optical Comparator  
Tru-Test Optical Comparator System with Quadra Check



# QUALITY POLICY

Endurance Carbide is committed to providing our customers with the highest quality products, on time...every time. We invest in the continual improvement of our people and processes to meet applicable requirements and strive for World Class status in all we do.

Endurance Carbide takes painstaking efforts to insure delivery of quality products. All orders are checked for accuracy when received and quality control checks are incorporated at various stages of order development, from order entry, all the way through shipment.

All of our gauges and gauging devices are routinely checked against certified masters in a controlled environment to insure and maintain accuracy at all stages of manufacturing.

Final inspection of all parts takes place in a controlled environment and all gauging can be traced to NIST standards. Each order, every part, and all of our associates are subject to the same strict quality control procedures.

# GAGES



## REVERSIBLE PLUG GAGES

Available in single- and double-ended configurations, these gages offer the convenience of reversibility when one side becomes worn. Plus, the ends are color-coded – green indicates “Go” members, while red indicates “No Go” members – for simple use. Specific requests, including depth steps and extra-length members, can be accommodated for an additional cost.



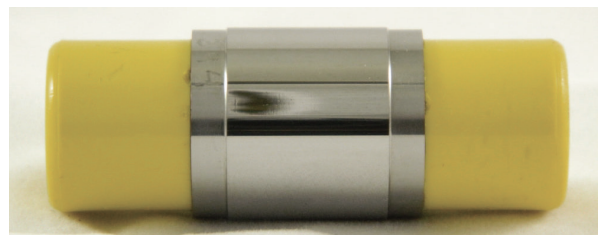
## TAPERLOCK GAGES

Designed for larger diameter gaging members. Taperlock gages feature long “Go” and short “No Go” sections, and they’re designed for use with larger-diameter gaging members. Other requests, including extra-length members, are available at an added cost. Size can be applied similar to reversible plug gages.



## PROGRESSIVE GAGES

Ideal for checking a short hole, these complete internal gages feature both “Go” and “No Go” sections on a single member..



## MASTER SETTING DISKS

Master setting disks are used for setting comparators, snap gages and other precision gages and typically used for checking cylindrical work. The discs’ ends feature insulated grips to prevent heat distortion.

Your Reputation **Depends** on it, **Demands** it, **Deserves** it.



**CURRY**  
FAMILY OF COMPANIES



**989.777.7950** [endurancecarbide.com](http://endurancecarbide.com)

Pease send all inquiries to [sales@EnduranceCarbide.com](mailto:sales@EnduranceCarbide.com)

ISO 9001:2015 Certified